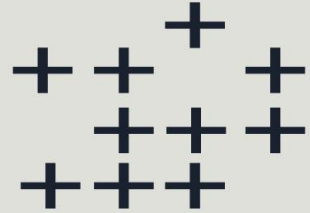
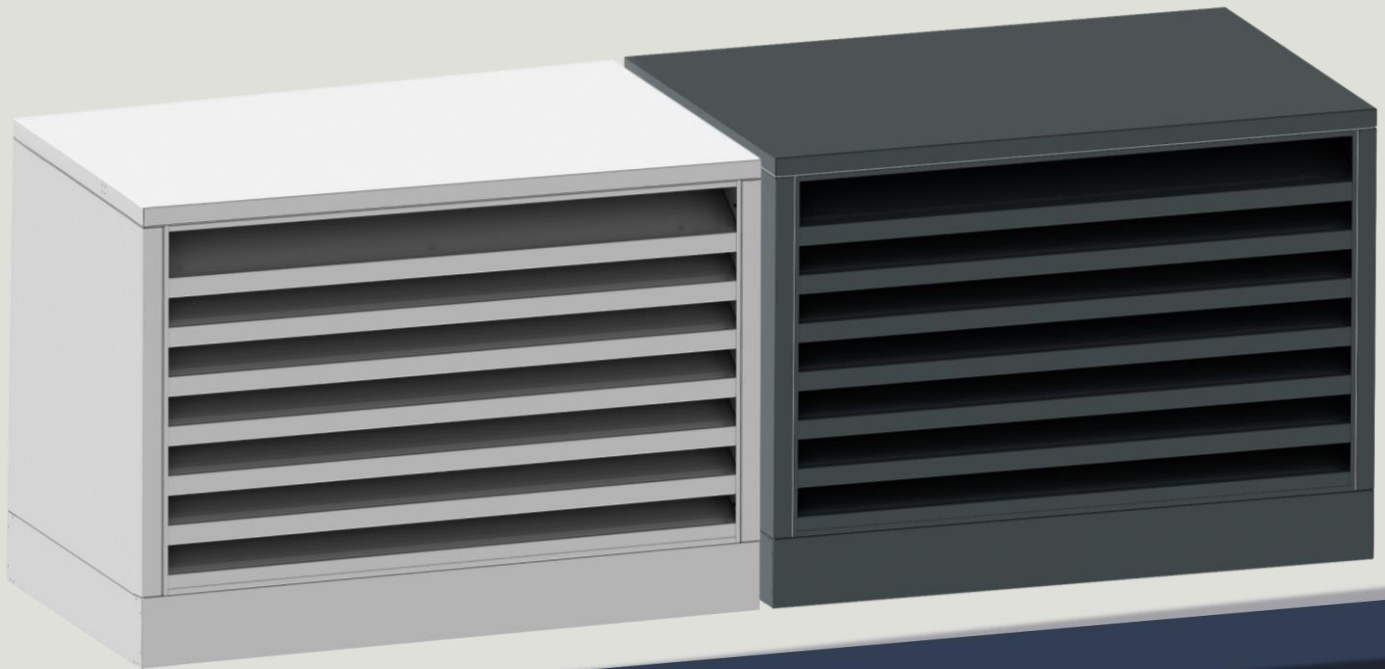


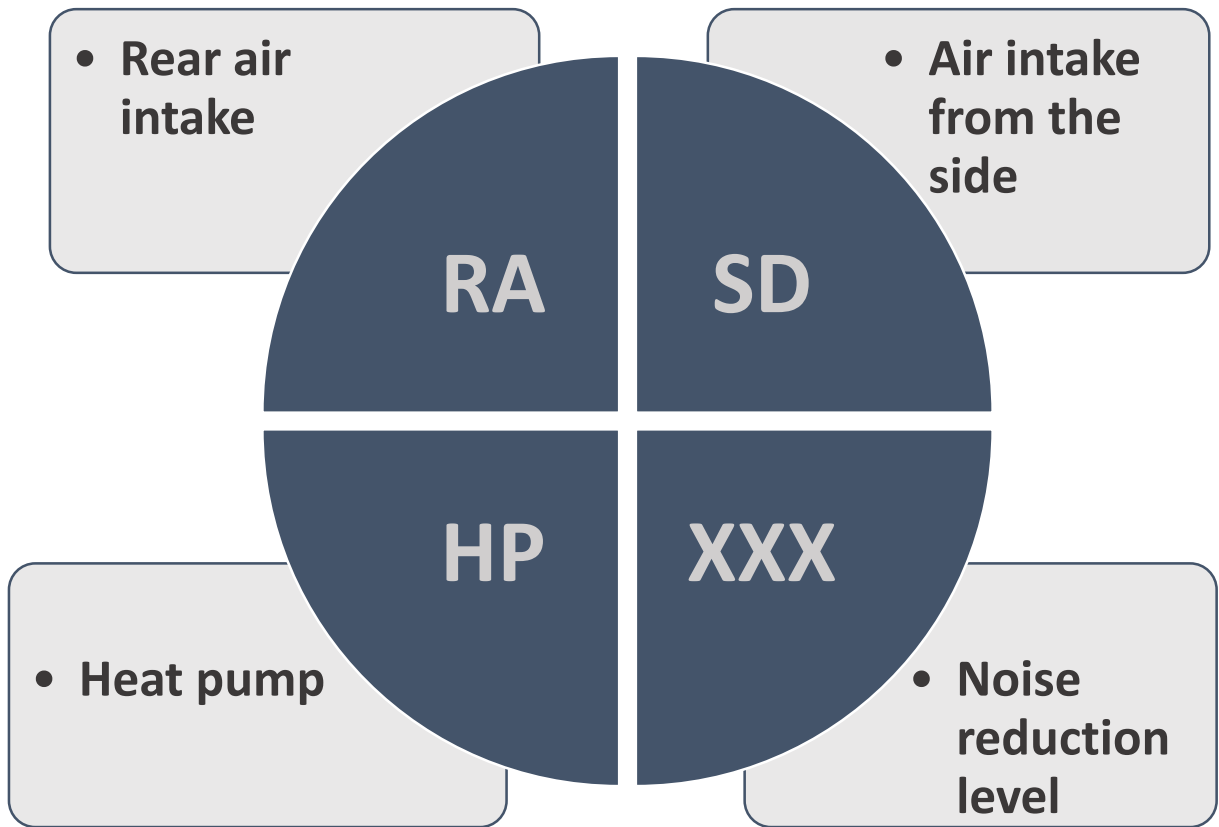


ipcom
acoustic



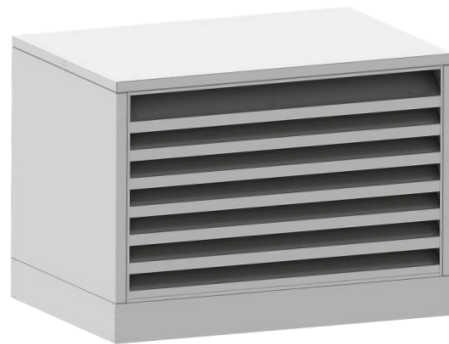
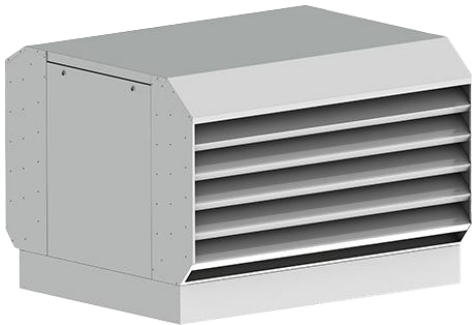
Acoustic Housing

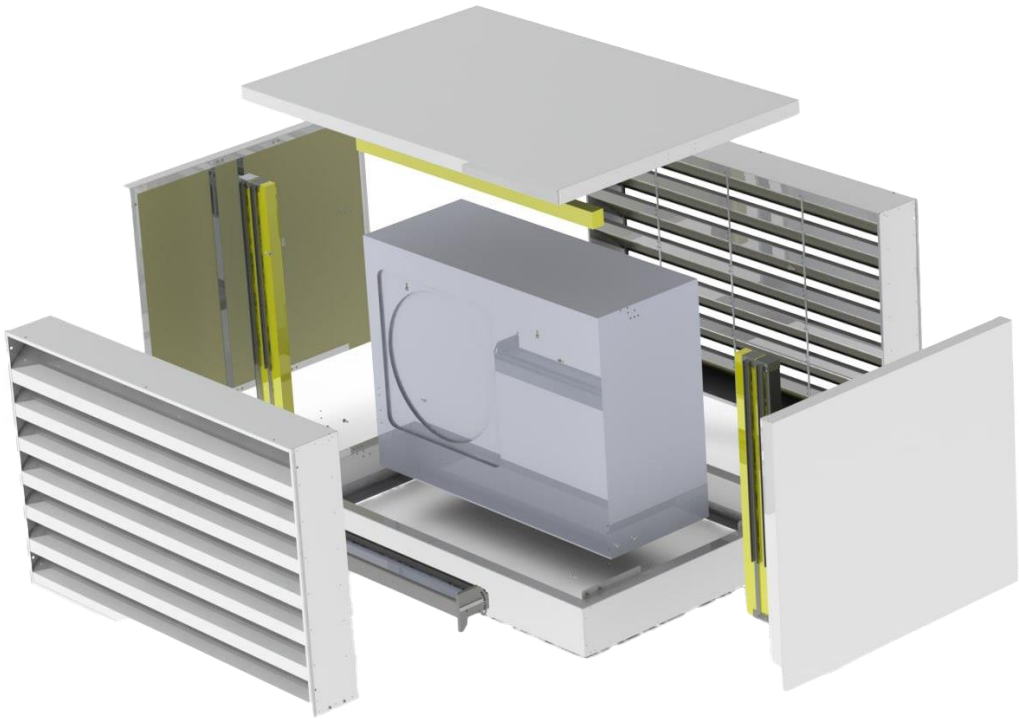






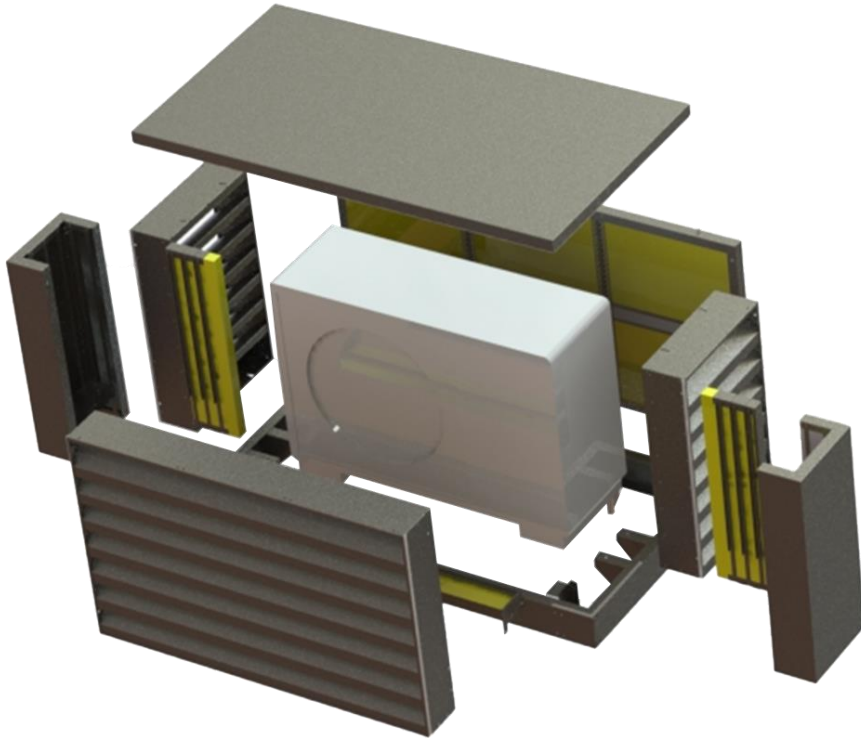
- Enclosure elements are made of 1 mm galvanized steel sheet
- Side panels, base and roof are made of separate structural elements for easy assembly
- All internal surfaces are covered with sound-absorbing material
- Two reflector boxes are installed inside the casing
- The sound-absorbing material used is a 50 mm mineral board, Acoustic Wool Sonet P
- It has 4 sizes (S, M, L, XL)
- Available in black, gray and anthracite gray (RAL9005, 7035 and 7016)





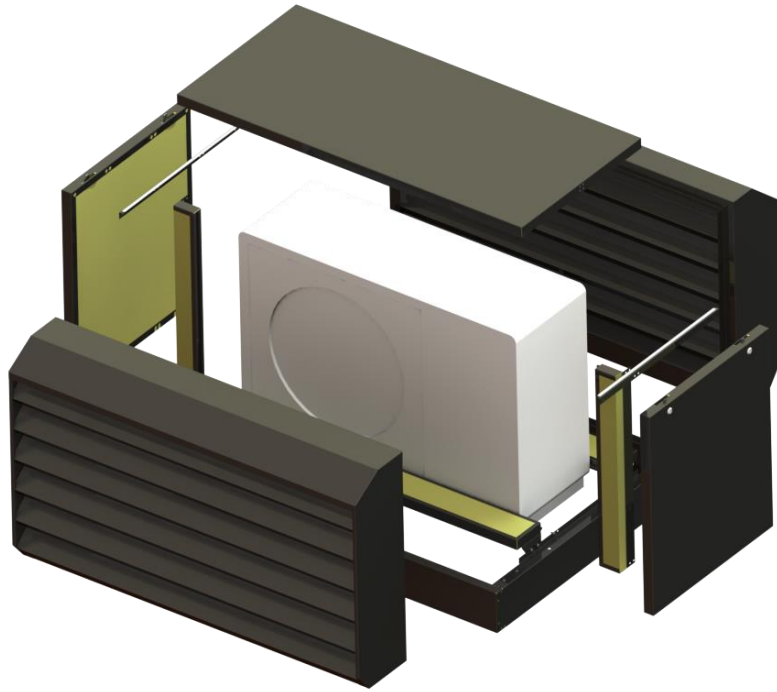
Model	dBA	Dimensions body H x W x D [mm]	Max.dimensions for installation H x W x D [mm]
HP-012-RA.S	12dBA	1008 x 1306 x 1006	808x1111x450
HP-012-RA.M		1132 x 1606 x 1106	932 x 1411 x 550
HP-012-RA.L		1632 x 1606 x 1106	1430 x 1411 x 550
HP-012-RA.XL		1882 x 1606 x 1106	1411 x 550 x 1678



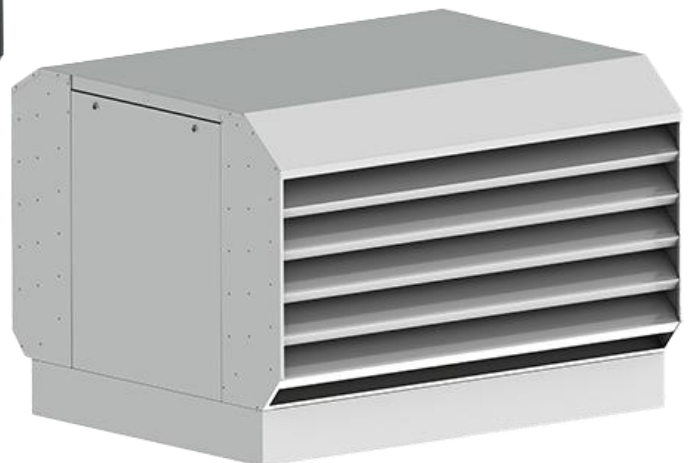


Model	dBA	Dimensions body H x W x D [mm]	Max.dimensions for installation H x W x D [mm]
HP-015-SD.S	15dBA	1008 x 1567 x 900	808x1100x422
HP-015-SD.M		1132 x 1867 x 1000	932 x 1400 x 522
HP-015-SD.L		1632 x 1867 x 1000	1430 x 1400 x 522
HP-015-SD.XL		1882 x 1867 x 1000	1678 x 1400 x 522





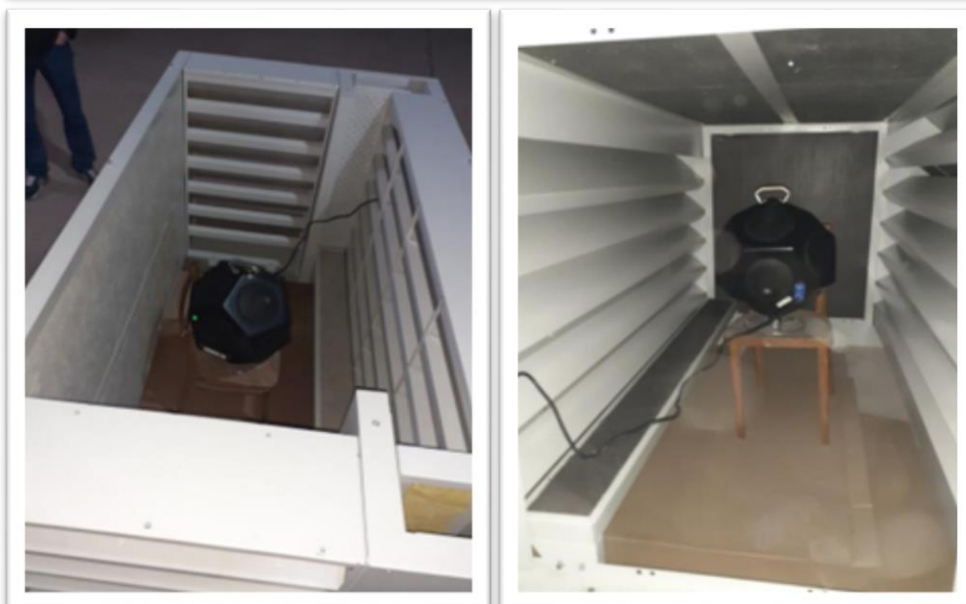
Model	dBA	Dimensions body H x W x D [mm]	Max.dimensions for installation H x W x D [mm]
HP-018-SD.M	18dBA	1153 x 1605 x 1350	930 x 1450 x 550
HP-018-SD.L		1558 x 1605 x 1350	1335 x 1450 x 550
HP-018-SD.XL		1828 x 1605 x 1350	1605 x 1450 x 550



All casings, produced by the Company **IPCOM Acoustic**, have passed noise measurement testing and have appropriate protocols.

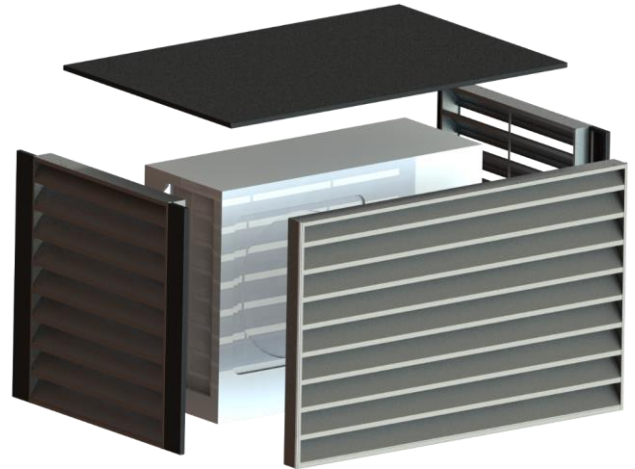
Measurements of the effectiveness of noise reduction by casings have been carried out using a test noise source - dodecahedron, pink noise was used as a test signal (Pink Noise 50-20000Hz). Dodecahedron was installed in the middle of casing. The measuring points were located at a distance of 1000 mm from each of the faces of casing and at a height of 1500 mm from the floor surface. The position of dodecahedron was unchanged, and measurements have been made at fixed measurement points with and without casing installed.

Sound absorbing material, used in casings, has **CE** certificate, which corresponds to **EU** Standards.





A blend of security and style. **IPCOM Acoustic** anti-vandal casings for heat pumps offer robust protection and elegant design in one solution.



Crafted from **1mm** thick, high-strength **galvanized steel**, our casings provide reliable protection for your equipment against a range of external threats: vandalism, theft, and adverse weather conditions. With a wide color palette, including popular shades such as **RAL 9005**, **7035**, and **7016**, you can select a hood that perfectly complements your home or landscape design.

Model	Dimensions body H x W x D [mm]	Max.dimensions for installation H x W x D [mm]
HP-VP-M	1153 x 1605 x 1350	930 x 1450 x 550
HP-VP-L	1558 x 1605 x 1350	1335 x 1450 x 550
HP-VP-XL	1828 x 1605 x 1350	1605 x 1450 x 550



Contacts



+48-57-358-07-02



info@ipcom-acoustic.eu

